



Order: (888)-282-5810 (Phone)
(818)-707-0392 (Fax)
order@abiocode.com
Web: www.Abiocode.com

PKM2 (C) Antibody, Rabbit Polyclonal

Cat#: R2913-2

Quantity: 100 ul

Predicted | Observed M.W.: 58 | 65 kDa

Lot#: Refer to vial

Application: WB

Uniprot ID: P14618

Background:

Pyruvate kinase isozymes M1/M2 (PKM2) belongs to the pyruvate kinase family. PKM2 is a glycolytic enzyme that catalyzes the transfer of a phosphoryl group from phosphoenolpyruvate (PEP) to ADP, generating ATP. PKM2 stimulates POU5F1-mediated transcriptional activation, and it also plays a general role in caspase independent cell death of tumor cells.

Other Names:

Pyruvate kinase isozymes M1/M2, Cytosolic thyroid hormone-binding protein, CTHBP, Opa-interacting protein 3, OIP-3, Pyruvate kinase 2/3, Pyruvate kinase muscle isozyme, Thyroid hormone-binding protein 1, THBP1, Tumor M2-PK, p58, OIP3, PK2, PK3, PKM2

Source and Purity:

Rabbit polyclonal antibodies were produced by immunizing animals with a GST-fusion protein containing the C-terminal region of mouse PKM2. Antibodies were purified by affinity purification using immunogen.

Storage Buffer and Condition:

Supplied in 1 x PBS (pH 7.4), 100 ug/ml BSA, 40% Glycerol, 0.01% NaN₃. Store at -20 °C. Stable for 6 months from date of receipt.

Species Specificity:

Human, Mouse

Tested Applications:

WB: 1:1,000-1:3,000 (detect endogenous protein*)

*: The apparent protein size on WB may be different from the calculated M.W. due to modifications.

Product Data:

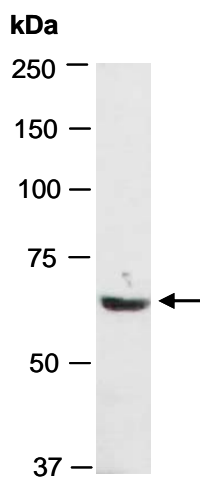


Fig 1. Western blot of total cell extracts from mouse thymus, using anti-PKM2 (C) (R2913-2) at RT for 2 h.