



Order: (888)-282-5810 (Phone)  
(818)-707-0392 (Fax)  
[order@abiocode.com](mailto:order@abiocode.com)  
Web: [www.Abiocode.com](http://www.Abiocode.com)

---

## **PDE3B (vPair™) Antibodies**

**Cat#: R1578-vp**

**Lot#: Refer to vial**

**Predicted | Observed M.W.: 124 | 130 kDa**

**Uniprot ID: Q13370**

**Application: WB**

**Quantity:** 50 ul PDE3B (N) (R1578-1b) Rabbit Polyclonal Antibody &

50 ul PDE3B (C) (R1578-2) Rabbit Polyclonal Antibody

### **Product Introduction:**

vPair™ antibodies represent a pair of fully characterized antibodies that recognize two different regions of a target protein. The product is developed by Abiocode to address whether the signal observed truly represents the protein of interest, an often encountered issue in antibody-based assays. The use of a pair of fully characterized vPair™ antibodies in the same assay can validate signal specificity since vPair™ antibodies recognize two independent epitopes of the same protein. Different sets of vPair™ antibodies are developed at Abiocode to work with specific applications, including antibody arrays, Western blot, IP-Western, ChIP, IHC, and FACS.

### **Background:**

cGMP-inhibited 3',5'-cyclic phosphodiesterase B (PDE3B) is a multi-pass membrane protein that belongs to the cyclic nucleotide phosphodiesterase family. PDE3B is a cyclic nucleotide phosphodiesterase with a dual-specificity for the second messengers cAMP and cGMP, which are key regulators of many important physiological processes. PDE3B assembles a signaling complex through simultaneous binding to RAPGEF3 and PIK3R6, in which the PI3K gamma complex is activated by RAPGEF3. PDE3B may play a role in fat metabolism and angiogenesis.

### **Other Names:**

cGMP-inhibited 3',5'-cyclic phosphodiesterase B, CGIPDE1, CGIP1, Cyclic GMP-inhibited phosphodiesterase B, CGI-PDE B, HcGIP1

### **Source and Purity:**

Rabbit polyclonal antibodies were produced by immunizing animals with GST-fusion proteins containing either the N-terminal [PDE3B (N) (R1578-1b)] or the C-terminal [PDE3B (C) (R1578-2)] region of human PDE3B. Antibodies were purified by affinity purification using immunogen.

### **Species Specificity:**

Human

---

**For research use only. Not for therapeutic or diagnostic purposes.  
Abiocode, Inc., 29397 Agoura Rd., Ste 106, Agoura Hills, CA 91301**

**Storage Buffer and Condition:**

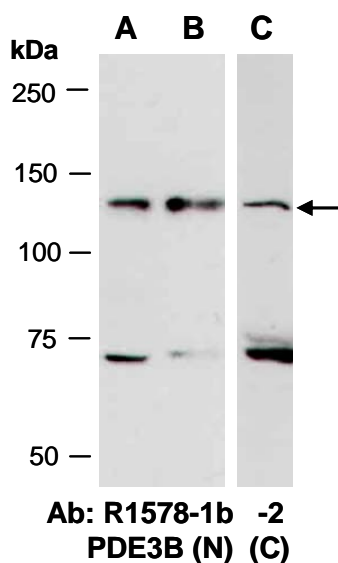
Supplied in 1 x PBS (pH 7.4), 100 ug/ml BSA, 40% Glycerol, 0.01% NaN<sub>3</sub>. Store at -20 °C. Stable for 6 months from date of receipt.

**Tested Applications:**

WB: 1:1,000-1:3,000 (detect endogenous protein\*)

\*: The apparent protein size on WB may be different from the calculated M.W. due to modifications.

**Product Data:**



**Fig 1.** Western blot of total cell extracts from (A, C) human HeLa, (B) human Jurkat; using 2 independent Abs against 2 distinct regions of human PDE3B at RT for 2 h.