



Order: (888)-282-5810 (Phone)
(818)-707-0392 (Fax)
order@abiocode.com
Web: www.Abiocode.com

SCARF1 (M) Antibody, Rabbit Polyclonal

Cat#: R2194-1

Quantity: 100 ul

Predicted | Observed M.W.: 87 | 100 kDa

Lot#: Refer to vial

Application: WB, IP

Uniprot ID: Q14162

Background:

SCARF1, scavenger receptor class F member 1, is expressed in endothelial cells and mediates the binding and degradation of acetylated low density lipoprotein (Ac-LDL). SCARF1 mediates heterophilic interactions, suggesting a function as adhesion protein. SCARF1 also plays a role in the regulation of neurite-like outgrowth.

Other Names:

Acetyl LDL receptor, Scavenger receptor expressed by endothelial cells 1, KIAA0149, SREC

Source and Purity:

Rabbit polyclonal antibodies were produced by immunizing animals with a GST-fusion protein containing the middle region of human SCARF1. Antibodies were purified by affinity purification using immunogen.

Storage Buffer and Condition:

Supplied in 1 x PBS (pH 7.4), 100 ug/ml BSA, 40% Glycerol, 0.01% NaN₃. Store at -20 °C. Stable for 6 months from date of receipt.

Species Specificity:

Human

Tested Applications:

WB: 1:1,000-1:3,000 (detect endogenous protein*)

IP: 1:100- 1:200

*: The apparent protein size on WB may be different from the calculated M.W. due to modifications.

Product Data:

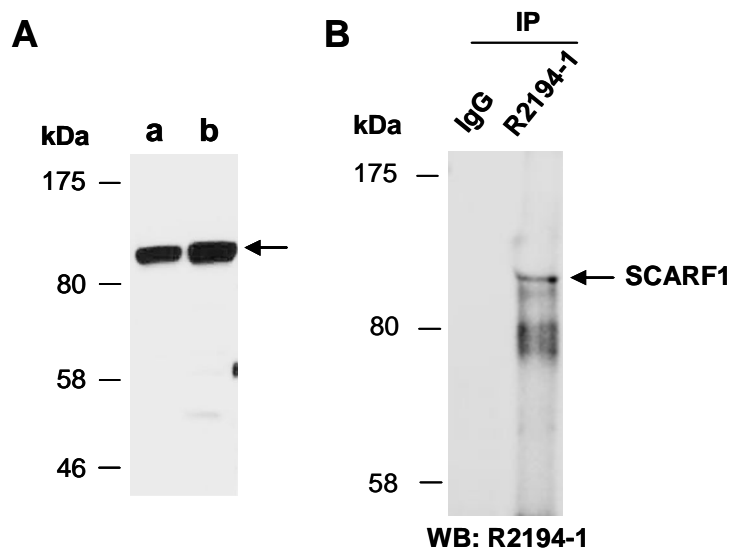


Fig 1. (A) Western blot (WB) of total cell extracts from a. human HeLa, b. human Jurkat; using anti-SCARF1 (M) (R2194-1) at RT for 2 h. **(B)** IP-WB. Immunoprecipitation (IP) was performed with HeLa extracts with IgG or anti-SCARF1 (M) (R2194-1), followed by WB with the same Ab.