



Order: (888)-282-5810 (Phone)  
(818)-707-0392 (Fax)  
[order@abiocode.com](mailto:order@abiocode.com)  
Web: [www.Abiocode.com](http://www.Abiocode.com)

---

## PROM1 (vPair™) Antibodies

**Cat#: R2946-vp**

**Lot#: Refer to vial**

**Predicted | Observed M.W.: 97 kDa**

**Uniprot ID: O43490**

**Application: WB**

**Quantity:** 50 ul PROM1 (N) (R2946-1) Rabbit Polyclonal Antibody &  
50 ul PROM1 (C) (R2946-2) Rabbit Polyclonal Antibody

### **Product Introduction:**

vPair™ antibodies represent a pair of fully characterized antibodies that recognize two different regions of a target protein. The product is developed by Abiocode to address whether the signal observed truly represents the protein of interest, an often encountered issue in antibody-based assays. The use of a pair of fully characterized vPair™ antibodies in the same assay can validate signal specificity since vPair™ antibodies recognize two independent epitopes of the same protein. Different sets of vPair™ antibodies are developed at Abiocode to work with specific applications, including antibody arrays, Western blot, IP-Western, ChIP, IHC, and FACS.

### **Background:**

Prominin-1 (PROM1) is also known as CD133, which is a penta-span transmembrane glycoprotein. PROM1 localizes to membrane protrusions and is often expressed on adult stem cells, where it is thought to function in maintaining stem cell properties by suppressing differentiation. Mutations in the PROM1 gene have been shown to result in retinitis pigmentosa and Stargardt disease. Expression of PROM1 is also associated with several types of cancer. PROM1 is expressed from at least five alternative promoters in a tissue-dependent manner. Multiple transcript variants encoding different isoforms have been found for this gene [provided by RefSeq].

### **Other Names:**

Prominin-1, Antigen AC133, Prominin-like protein 1, CD133, PROML1, AC133, MCDR2, RP41, STGD4

### **Source and Purity:**

Rabbit polyclonal antibodies were produced by immunizing animals with GST-fusion proteins containing either the N-terminal [PROM1 (N) (R2946-1)] or the C-terminal [PROM1 (C) (R2946-2)] region of human PROM1. Antibodies were purified by affinity purification using immunogen.

### **Species Specificity:**

Human

---

**For research use only. Not for therapeutic or diagnostic purposes.  
Abiocode, Inc., 29397 Agoura Rd., Ste 106, Agoura Hills, CA 91301**

**Storage Buffer and Condition:**

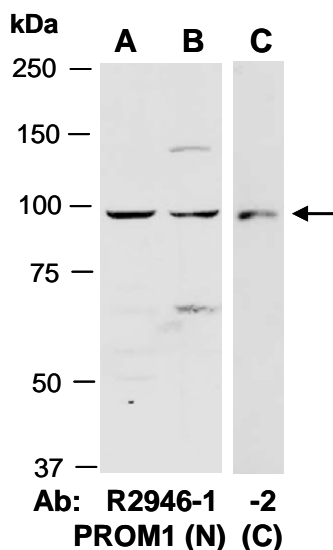
Supplied in 1 x PBS (pH 7.4), 100 ug/ml BSA, 40% Glycerol, 0.01% NaN<sub>3</sub>. Store at -20 °C. Stable for 6 months from date of receipt.

**Tested Applications:**

WB: 1:1,000-1:3,000 (detect endogenous protein\*)

\*: The apparent protein size on WB may be different from the calculated M.W. due to modifications.

**Product Data:**



**Fig 1.** Western blot of total cell extracts from (A) human HeLa, (B, C) human Jurkat; using 2 independent Abs against 2 distinct regions of human PROM1 at RT for 2 h.