



Order: (888)-282-5810 (Phone)
(818)-707-0392 (Fax)
order@abiocode.com
Web: www.Abiocode.com

SIRT2 (C) Antibody, Rabbit Polyclonal

Cat#: R2347-2

Quantity: 100 ul

Predicted | Observed M.W.: 43 kDa

Lot#: Refer to vial

Application: WB

Uniprot ID: Q8IXJ6

Background:

NAD-dependent protein deacetylase sirtuin-2 (SIRT2) belongs to the sirtuin family and the class I subfamily. SIRT2 is a NAD-dependent protein deacetylase, which deacetylates internal lysines on histone and non-histone proteins. SIRT2 deacetylates 'Lys-40' of alpha-tubulin and is involved in the control of mitotic exit in the cell cycle, probably via its role in the regulation of cytoskeleton. SIRT2 also deacetylates PCK1, opposing proteasomal degradation.

Other Names:

NAD-dependent protein deacetylase sirtuin-2, Regulatory protein SIR2 homolog 2, SIR2-like protein 2, SIR2L, SIR2L2

Source and Purity:

Rabbit polyclonal antibodies were produced by immunizing animals with a GST-fusion protein containing the C-terminal region of human SIRT2. Antibodies were purified by affinity purification using immunogen.

Storage Buffer and Condition:

Supplied in 1 x PBS (pH 7.4), 100 ug/ml BSA, 40% Glycerol, 0.01% NaN₃. Store at -20 °C. Stable for 6 months from date of receipt.

Species Specificity:

Human

Tested Applications:

WB: 1:1,000-1:3,000 (detect endogenous protein*)

*: The apparent protein size on WB may be different from the calculated M.W. due to modifications.

Product Data:

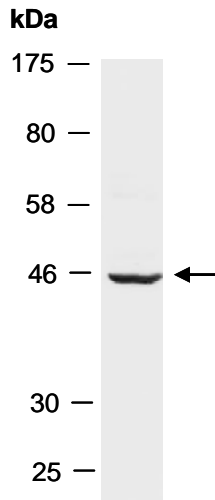


Fig 1. Western blot of total cell extracts from human HeLa; using anti-SIRT2 (C) (R2347-2) at RT for 2 h.