



Order: (888)-282-5810 (Phone)  
(818)-707-0392 (Fax)  
[order@abiocode.com](mailto:order@abiocode.com)  
Web: [www.Abiocode.com](http://www.Abiocode.com)

---

## **PRKAB1 (C) Antibody, Rabbit Polyclonal**

**Cat#: R1620-2**

**Quantity: 100 ul**

**Predicted | Observed M.W.: 30 | 40 kDa**

**Lot#: Refer to vial**

**Application: WB**

**Uniprot ID: Q9Y478**

### **Background:**

5'-AMP-activated protein kinase subunit beta-1 (PRKAB1) belongs to the 5'-AMP-activated protein kinase beta subunit family. PRKAB1 is a non-catalytic subunit of AMP-activated protein kinase (AMPK), an energy sensor protein kinase that plays a key role in regulating cellular energy metabolism. In response to reduction of intracellular ATP levels, AMPK activates energy-producing pathways and inhibits energy-consuming processes: inhibits protein, carbohydrate and lipid biosynthesis, as well as cell growth and proliferation.

### **Other Names:**

5'-AMP-activated protein kinase subunit beta-1, AMPK subunit beta-1, AMPKb, AMPK

### **Source and Purity:**

Rabbit polyclonal antibodies were produced by immunizing animals with a GST-fusion protein containing the C-terminal region of human PRKAB1. Antibodies were purified by affinity purification using immunogen.

### **Storage Buffer and Condition:**

Supplied in 1 x PBS (pH 7.4), 100 ug/ml BSA, 40% Glycerol, 0.01% NaN<sub>3</sub>. Store at -20 °C. Stable for 6 months from date of receipt.

### **Species Specificity:**

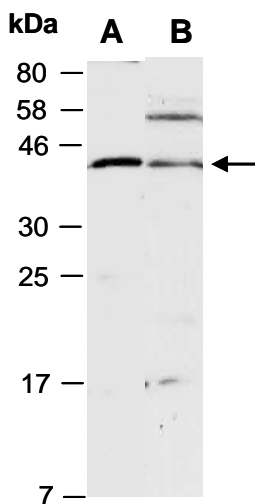
Human, Mouse

### **Tested Applications:**

WB: 1:1,000-1:3,000 (detect endogenous protein\*)

\*: The apparent protein size on WB may be different from the calculated M.W. due to modifications.

**Product Data:**



**Fig 1.** Western blot of total cell extracts from (A) mouse thymus, (B) human Jurkat; using anti-PRKAB1 (C) (R1620-2) at RT for 2 h.