



Order: (888)-282-5810 (Phone)
(818)-707-0392 (Fax)
order@abiocode.com
Web: www.Abiocode.com

ENO2 (N) Antibody, Rabbit Polyclonal

Cat#: R2283-1

Quantity: 100 ul

Predicted | Observed M.W.: 47 kDa

Lot#: Refer to vial

Application: WB

Uniprot ID: P09104

Background:

ENO2 has neurotrophic and neuroprotective properties on a broad spectrum of central nervous system (CNS) neurons. ENO2 binds, in a calcium-dependent manner, to cultured neocortical neurons and promotes cell survival.

Other Names:

Gamma-enolase, 2-phospho-D-glycerate hydro-lyase, Enolase 2, Neural enolase, Neuron-specific enolase, NSE

Source and Purity:

Rabbit polyclonal antibodies were produced by immunizing animals with a GST-fusion protein containing the N-terminal region of human ENO2. Antibodies were purified by affinity purification using immunogen.

Storage Buffer and Condition:

Supplied in 1 x PBS (pH 7.4), 100 ug/ml BSA, 40% Glycerol, 0.01% NaN₃. Store at -20 °C. Stable for 6 months from date of receipt.

Species Specificity:

Human, Mouse

Tested Applications:

WB: 1:1,000-1:3,000 (detect endogenous protein*)

*: The apparent protein size on WB may be different from the calculated M.W. due to modifications.

Product Data:

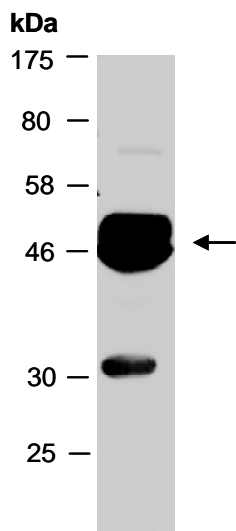


Fig 1. Western blot of total cell extracts from mouse brain; using anti-ENO2 (N) (R2283-1) at RT for 2 h.