



Order: (888)-282-5810 (Phone)
(818)-707-0392 (Fax)
order@abiocode.com
Web: www.Abiocode.com

RECQL5 (C2) Antibody, Rabbit Polyclonal

Cat#: R2078-4

Quantity: 100 ul

Predicted | Observed M.W.: 108 kDa

Lot#: Refer to vial

Application: WB

Uniprot ID: Q8VID5

Background:

RecQ helicase protein-like 5 (RECQL5) is a helicase that is important for genome stability. RECQL5 also prevents aberrant homologous recombination by displacing RAD51 from ssDNA. Three transcript variants encoding different isoforms have been found for this gene [provided by RefSeq].

Other Names:

Protein Recql5, RecQ helicase protein-like 5 beta, RecQ protein-like 5, isoform CRA_b, RECQL5 beta, RECQ5

Source and Purity:

Rabbit polyclonal antibodies were produced by immunizing animals with a GST-fusion protein containing the C-terminal region of mouse RECQL5. Antibodies were purified by affinity purification using immunogen.

Storage Buffer and Condition:

Supplied in 1 x PBS (pH 7.4), 100 ug/ml BSA, 40% Glycerol, 0.01% NaN₃. Store at -20 °C. Stable for 6 months from date of receipt.

Species Specificity:

Human, Mouse

Tested Applications:

WB: 1:1,000-1:3,000 (detect endogenous protein*)

*: The apparent protein size on WB may be different from the calculated M.W. due to modifications.

Product Data:

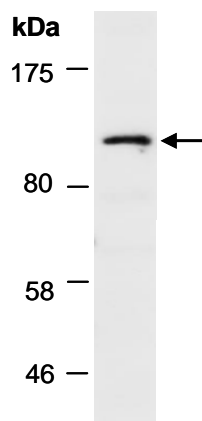


Fig 1. Western blot of total cell extracts
From human HeLa; using anti-RECQL5 (C2)
(R2078-4) at RT for 2 h.