



Order: (888)-282-5810 (Phone)
(818)-707-0392 (Fax)
order@abiocode.com
Web: www.Abiocode.com

SORBS1 (N) Antibody, Rabbit Polyclonal

Cat#: R0774-1

Quantity: 100 ul

Predicted | Observed M.W.: 142 kDa

Lot#: Refer to vial

Application: WB

Uniprot ID: Q9BX66

Background:

SORBS1 plays a role in tyrosine phosphorylation of CBL by linking CBL to the insulin receptor. SORBS1 is required for insulin-stimulated glucose transport. SORBS1 involved in formation of actin stress fibers and focal adhesions.

Other Names:

Sorbin and SH3 domain-containing protein 1, Ponsin, SH3 domain protein 5, SH3P12, c-Cbl-associated protein, CAP, KIAA0894, KIAA1296, SH3D5, FLJ12406, ponsin, sh3p12

Source and Purity:

Rabbit polyclonal antibodies were produced by immunizing animals with a GST-fusion protein containing the N-terminal region of human SORBS1. Antibodies were purified by affinity purification using immunogen.

Storage Buffer and Condition:

Supplied in 1 x PBS (pH 7.4), 100 ug/ml BSA, 40% Glycerol, 0.01% NaN₃. Store at -20 °C. Stable for 6 months from date of receipt.

Species Specificity:

Human, Mouse

Tested Applications:

WB: 1:1,000-1:3,000 (detect endogenous protein*)

*: The apparent protein size on WB may be different from the calculated M.W. due to modifications.

Product Data:

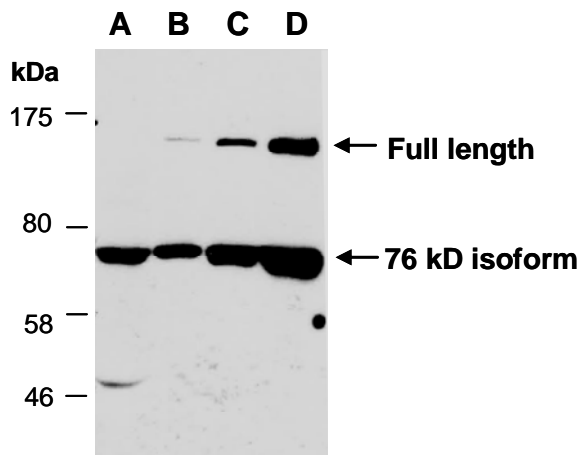


Fig 1. Western blot of total cell extracts from (A) mouse brain, (B) mouse thymus, (C) human HeLa, (D) human Jurkat; using anti-SORBS1 (N) (R0774-1) at RT for 2 h.