



Order: (888)-282-5810 (Phone)
(818)-707-0392 (Fax)
order@abiocode.com
Web: www.Abiocode.com

SALL3 (C) Antibody, Rabbit Polyclonal

Cat#: R1429-2

Quantity: 100 ul

Predicted | Observed M.W.: 135 | 150-160 kDa

Lot#: Refer to vial

Application: WB

Uniprot ID: Q9BXA9

Background:

Sal-like protein 3 (SALL3) is a sal-like C2H2-type zinc-finger protein, and belongs to a family of evolutionarily conserved genes found in species as diverse as *Drosophila*, *C. elegans*, and vertebrates. Mutations in some of these genes are associated with congenital disorders in human, suggesting their importance in embryonic development. SALL3 binds to DNA methyltransferase 3 alpha (DNMT3A), and reduces DNMT3A-mediated CpG island methylation. It is suggested that silencing of SALL3, resulting in acceleration of DNA methylation, may have a role in oncogenesis [provided by RefSeq].

Other Names:

Sal-like protein 3, Zinc finger protein 796, Zinc finger protein SALL3, hSALL3, ZNF796

Source and Purity:

Rabbit polyclonal antibodies were produced by immunizing animals with a GST-fusion protein containing the C-terminal region of human SALL3. Antibodies were purified by affinity purification using immunogen.

Storage Buffer and Condition:

Supplied in 1 x PBS (pH 7.4), 100 ug/ml BSA, 40% Glycerol, 0.01% NaN₃. Store at -20 °C. Stable for 6 months from date of receipt.

Species Specificity:

Human, Mouse

Tested Applications:

WB: 1:1,000-1:3,000 (detect endogenous protein*)

*: The apparent protein size on WB may be different from the calculated M.W. due to modifications.

Product Data:

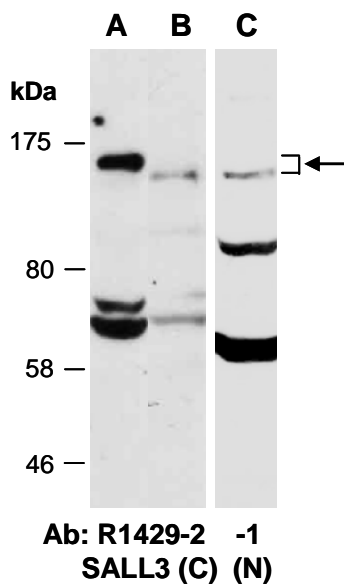


Fig 1. Western blot of total cell extracts from (A) mouse brain, (B, C) human Jurkat; using 2 independent Abs against 2 independent regions of human SALL3 at RT for 2 h.