



Order: (888)-282-5810 (Phone)
(818)-707-0392 (Fax)
order@abiocode.com
Web: www.Abiocode.com

SHC2 (C) Antibody, Rabbit Polyclonal

Cat#: R1177-2

Quantity: 100 ul

Predicted | Observed M.W.: 62 kDa

Lot#: Refer to vial

Application: WB

Uniprot ID: P98077

Background:

SHC-transforming protein 2 (SHC2) is a signaling adapter protein that contains a PID domain and an SH2 domain. SHC2 couples activated growth factor receptors to signaling pathway in neurons. SHC2 interacts with the Trk receptors in a phosphotyrosine-dependent manner, and is involved in the signal transduction pathways of neurotrophin-activated Trk receptors in cortical neurons. SHC2 is highly expressed in brain, although it is also expressed in other cell types, such as endothelial cells .

Other Names:

SHC-transforming protein 2, Protein Sck, SHC-transforming protein B, Src homology 2 domain-containing-transforming protein C2, SH2 domain protein C2, SCK, SHCB, SLI

Source and Purity:

Rabbit polyclonal antibodies were produced by immunizing animals with a GST-fusion protein containing the C-terminal region of human SHC2. Antibodies were purified by affinity purification using immunogen.

Storage Buffer and Condition:

Supplied in 1 x PBS (pH 7.4), 100 ug/ml BSA, 40% Glycerol, 0.01% NaN₃. Store at -20 °C. Stable for 6 months from date of receipt.

Species Specificity:

Human, Mouse

Tested Applications:

WB: 1:1,000-1:3,000 (detect endogenous protein*)

*: The apparent protein size on WB may be different from the calculated M.W. due to modifications.

Product Data:

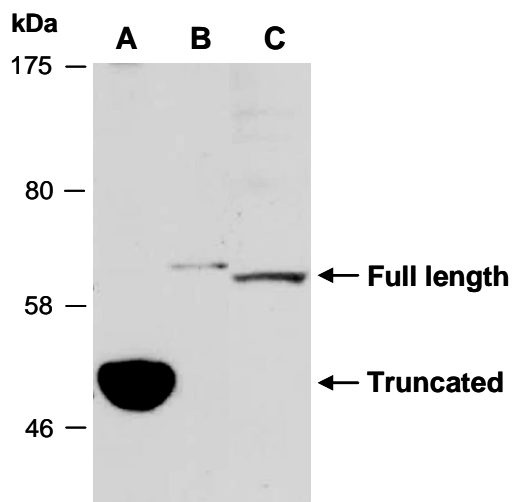


Fig 1. Western blot of total cell extracts from (A) mouse brain, (B) mouse thymus, (C) human Jurkat; using anti-SHC2 (C) (R1177-2) at RT for 2 h. The 51 kD protein in brain is likely to be the truncated form of SHC2 [Ratcliffe K. et al., *Oncogene* (2002) 21:6307-16].