



Order: (888)-282-5810 (Phone)
(818)-707-0392 (Fax)
order@abiocode.com
Web: www.Abiocode.com

HDAC6 (M) Antibody, Rabbit Polyclonal

Cat#: R2111-3

Quantity: 100 ul

Predicted | Observed M.W.: 131 | 160 kDa

Lot#: Refer to vial

Application: WB

Uniprot ID: Q9Z2V5

Background:

Histone deacetylase 6 (HDAC6) belongs to the histone deacetylase family. HDAC6 has protein deacetylase activity, playing a central role in microtubule-dependent cell motility via deacetylation of tubulin. In addition, HDAC6 plays a key role in the degradation of misfolded proteins: when misfolded proteins are too abundant to be degraded by the chaperone refolding system and the ubiquitin-proteasome, HDAC6 mediates the transport of misfolded proteins to a cytoplasmic juxtanuclear structure called aggresome. HDAC6 probably acts as an adapter that recognizes polyubiquitinated misfolded proteins and target them to the aggresome, facilitating their clearance by autophagy.

Other Names:

Histone deacetylase 6, HD6, JM21, KIAA0901

Source and Purity:

Rabbit polyclonal antibodies were produced by immunizing animals with a GST-fusion protein containing the middle region of mouse HDAC6. Antibodies were purified by affinity purification using immunogen.

Storage Buffer and Condition:

Supplied in 1 x PBS (pH 7.4), 100 ug/ml BSA, 40% Glycerol, 0.01% NaN₃. Store at -20 °C. Stable for 6 months from date of receipt.

Species Specificity:

Human, Mouse

Tested Applications:

WB: 1:1,000-1:3,000 (detect endogenous protein*)

*: The apparent protein size on WB may be different from the calculated M.W. due to modifications.

Product Data:

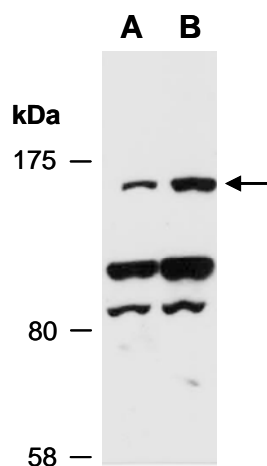


Fig 1. Western blot of total cell extracts from (A) human HeLa, (B) human Jurkat, using anti-HDAC6 (M) (R2111-3) at RT for 2 h.