



Order: (888)-282-5810 (Phone)
(818)-707-0392 (Fax)
order@abiocode.com
Web: www.Abiocode.com

S1PR2 (C) Antibody, Rabbit Polyclonal

Cat#: R1352-2

Quantity: 100 ul

Predicted | Observed M.W.: 39 | 47 kDa

Lot#: Refer to vial

Application: WB

Uniprot ID: O95136

Background:

Sphingosine 1-phosphate receptor 2 (S1PR2) is also known as Endothelial differentiation G-protein coupled receptor 5 (EDG5), which is a multi-pass cell membrane protein belonging to the G protein-coupled receptor 1 family. S1PR2 is a receptor for the lysosphingolipid sphingosine 1-phosphate (S1P). S1P is a bioactive lysophospholipid that elicits diverse physiological effect on most types of cells and tissues. When expressed in rat HTC4 hepatoma cells, S1PR2 is capable of mediating S1P-induced cell proliferation and suppression of apoptosis.

Other Names:

Sphingosine 1-phosphate receptor 2, S1P receptor 2, S1P2, Endothelial differentiation G-protein coupled receptor 5, Sphingosine 1-phosphate receptor Edg-5, S1P receptor Edg-5, EDG5

Source and Purity:

Rabbit polyclonal antibodies were produced by immunizing animals with a GST-fusion protein containing the C-terminal region of human S1PR2. Antibodies were purified by affinity purification using immunogen.

Storage Buffer and Condition:

Supplied in 1 x PBS (pH 7.4), 100 ug/ml BSA, 40% Glycerol, 0.01% NaN₃. Store at -20 °C. Stable for 6 months from date of receipt.

Species Specificity:

Human, Mouse

Tested Applications:

WB: 1:1,000-1:3,000 (detect endogenous protein*)

*: The apparent protein size on WB may be different from the calculated M.W. due to modifications.

Product Data:

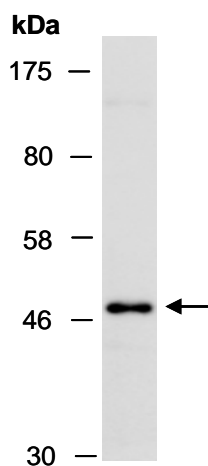


Fig 1. Western blot of total cell extracts from mouse brain, using anti-S1PR2 (C) (R1352-2) at RT for 2 h.