



Order: (888)-282-5810 (Phone)
(818)-707-0392 (Fax)
order@abiocode.com
Web: www.Abiocode.com

FANCE (C) Antibody, Rabbit Polyclonal

Cat#: R1501-2

Quantity: 100 ul

Predicted | Observed M.W.: 59 kDa

Lot#: Refer to vial

Application: WB

Uniprot ID: Q9HB96

Background:

Fanconi anemia group E protein (FANCE) is a nuclear protein that belongs to the multisubunit FA complex composed of FANCA, FANCB, FANCC, FANCE, FANCF, FANCG, FANCL/PHF9 and FANCM, which functions in DNA cross-links repair. FANCE is required for the nuclear accumulation of FANCC and provides a critical bridge between the FA complex and FANCD2. Defects in FANCE are a cause of Fanconi anemia complementation group E (FANCE).

Other Names:

Fanconi anemia group E protein, Protein FACE, FACE

Source and Purity:

Rabbit polyclonal antibodies were produced by immunizing animals with a GST-fusion protein containing the C-terminal region of human FANCE. Antibodies were purified by affinity purification using immunogen.

Storage Buffer and Condition:

Supplied in 1 x PBS (pH 7.4), 100 ug/ml BSA, 40% Glycerol, 0.01% NaN₃. Store at -20 °C. Stable for 6 months from date of receipt.

Species Specificity:

Human

Tested Applications:

WB: 1:1,000-1:3,000 (detect endogenous protein*)

*: The apparent protein size on WB may be different from the calculated M.W. due to modifications.

Product Data:

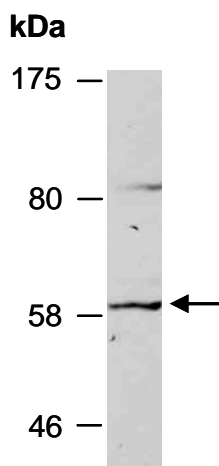


Fig 1. Western blot of total cell extracts from human Jurkat; using anti-FANCE (C) (R1501-2) at RT for 2 h.