



Order: (888)-282-5810 (Phone)  
(818)-707-0392 (Fax)  
[order@abiocode.com](mailto:order@abiocode.com)  
Web: [www.Abiocode.com](http://www.Abiocode.com)

---

## **S1PR1 (M) Antibody, Rabbit Polyclonal**

**Cat#: R1357-1**

**Quantity: 100 ul**

**Predicted | Observed M.W.: 43 | 46 kDa**

**Lot#: Refer to vial**

**Application: WB**

**Uniprot ID: P21453**

### **Background:**

Sphingosine 1-phosphate receptor 1 (S1PR1) is a multi-pass cell membrane protein that belongs to the G-protein coupled receptor 1 family. S1PR1 is a receptor for the lysosphingolipid sphingosine 1-phosphate (S1P). S1P is a bioactive lysophospholipid that elicits diverse physiological effect on most types of cells and tissues. This inducible epithelial cell G-protein-coupled receptor may be involved in the processes that regulate the differentiation of endothelial cells. S1PR1 seems to be coupled to the G(i) subclass of heteromeric G proteins.

### **Other Names:**

Sphingosine 1-phosphate receptor 1, S1P receptor 1, S1P1, Endothelial differentiation G-protein coupled receptor 1, Sphingosine 1-phosphate receptor Edg-1, S1P receptor Edg-1, CD363

### **Source and Purity:**

Rabbit polyclonal antibodies were produced by immunizing animals with a GST-fusion protein containing the middle region of human S1PR1. Antibodies were purified by affinity purification using immunogen.

### **Storage Buffer and Condition:**

Supplied in 1 x PBS (pH 7.4), 100 ug/ml BSA, 40% Glycerol, 0.01% NaN<sub>3</sub>. Store at -20 °C. Stable for 6 months from date of receipt.

### **Species Specificity:**

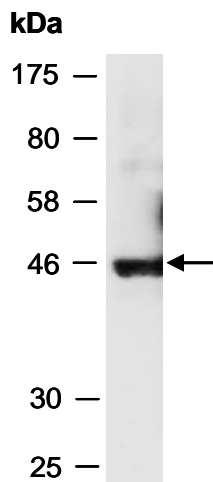
Human

### **Tested Applications:**

WB: 1:1,000-1:3,000 (detect endogenous protein\*)

\*: The apparent protein size on WB may be different from the calculated M.W. due to modifications.

**Product Data:**



**Fig 1.** Western blot of total cell extracts from human Jurkat; using anti-S1PR1 (M) (R1357-1) at RT for 2 h.