



Order: (888)-282-5810 (Phone)
(818)-707-0392 (Fax)
order@abiocode.com
Web: www.Abiocode.com

RRP1 (N) Antibody, Rabbit Polyclonal

Cat#: R2234-1

Quantity: 100 ul

Predicted | Observed M.W.: 53 kDa

Lot#: Refer to vial

Application: WB

Uniprot ID: P56182

Background:

RRP1 is the putative homolog of the yeast ribosomal RNA processing protein RRP1. RRP1 is involved in the late stages of nucleogenesis at the end of mitosis, and may be required for the generation of 28S rRNA. RRP1 is ubiquitously expressed in fetal and adult tissues.

Other Names:

Novel nuclear protein 1, Nucleolar protein Nop52, RRP1-like protein, D21S2056E, NNP1, NOP52, RRP1A

Source and Purity:

Rabbit polyclonal antibodies were produced by immunizing animals with a GST-fusion protein containing the N-terminal region of human RRP1. Antibodies were purified by affinity purification using immunogen.

Storage Buffer and Condition:

Supplied in 1 x PBS (pH 7.4), 100 ug/ml BSA, 40% Glycerol, 0.01% NaN₃. Store at -20 °C. Stable for 6 months from date of receipt.

Species Specificity:

Human, Mouse

Tested Applications:

WB: 1:1,000-1:3,000 (detect endogenous protein*)

*: The apparent protein size on WB may be different from the calculated M.W. due to modifications.

Product Data:

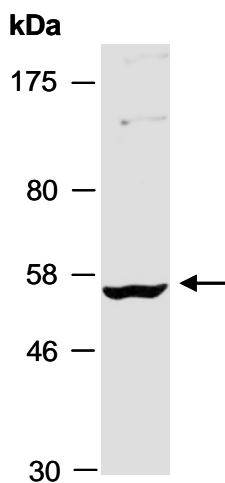


Fig 1. Western blot of total cell extracts from mouse brain; using anti-RRP1 (N) (R2234-1) at RT for 2 h.