



Order: (888)-282-5810 (Phone)
(818)-707-0392 (Fax)
order@abiocode.com
Web: www.Abiocode.com

CARD10 (C) Antibody, Rabbit Polyclonal

Cat#: R0905-2

Quantity: 100 ul

Predicted | Observed M.W.: 116 kDa

Lot#: Refer to vial

Application: WB

Uniprot ID: Q9BWT7

Background:

The caspase recruitment domain (CARD) is a protein module that consists of 6 or 7 antiparallel alpha helices. It participates in apoptosis signaling through highly specific protein-protein homophilic interactions. Like several other CARD proteins, CARD10 belongs to the membrane-associated guanylate kinase (MAGUK) family and activates NF-kappa-B through BCL10 and IKK.

Other Names:

Caspase recruitment domain-containing protein 10, CARD-containing MAGUK protein 3, Carma 3, CARMA3, Bcl10 binding protein and activator of NF- κ B, BIMP1, Caspase recruitment domain family, member 10

Source and Purity:

Rabbit polyclonal antibodies were produced by immunizing animals with a GST-fusion protein containing the C-terminal region of human CARD10. Antibodies were purified by affinity purification using immunogen.

Storage Buffer and Condition:

Supplied in 1 x PBS (pH 7.4), 100 ug/ml BSA, 40% Glycerol, 0.01% NaN₃. Store at -20 °C. Stable for 6 months from date of receipt.

Species Specificity:

Human

Tested Applications:

WB: 1:1,000-1:3,000 (detect endogenous protein*)

*: The apparent protein size on WB may be different from the calculated M.W. due to modifications.

Product Data:

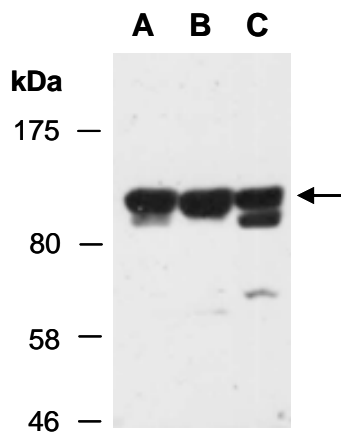


Fig 1. Western blot of total cell extracts from (A) human HeLa; (B) human Jurkat, (C) human T47D, using anti-CARD10 (C) (R0905-2) at RT for 2 h.