



Order: (888)-282-5810 (Phone)
(818)-707-0392 (Fax)
order@abiocode.com
Web: www.Abiocode.com

FBW7 (N) Antibody, Rabbit Polyclonal

Cat#: R0930-1

Quantity: 100 ul

Predicted | Observed M.W.: 80 | 100 kDa

Lot#: Refer to vial

Application: WB

Uniprot ID: Q969H0

Background:

F-box/WD repeat-containing protein 7 (FBXW7) is a substrate recognition component of a SCF (SKP1-CUL1-F-box protein) E3 ubiquitin-protein ligase complex which mediates the ubiquitination and subsequent proteasomal degradation of target proteins. FBXW7 probably recognizes and binds to phosphorylated target proteins. FBXW7 is involved in the degradation of cyclin-E, MYC, NOTCH1 released notch intracellular domain (NICD), and probably PSEN1.

Other Names:

F-box/WD repeat-containing protein 7, Archipelago homolog, hAgo, F-box and WD-40 domain-containing protein 7, F-box protein FBX30, SEL-10, hCdc4, FBW7, FBX30, SEL10

Source and Purity:

Rabbit polyclonal antibodies were produced by immunizing animals with a GST-fusion protein containing the N-terminal region of human DDB1. Antibodies were purified by affinity purification using immunogen.

Storage Buffer and Condition:

Supplied in 1 x PBS (pH 7.4), 100 ug/ml BSA, 40% Glycerol, 0.01% NaN₃. Store at -20 °C. Stable for 6 months from date of receipt.

Species Specificity:

Human

Tested Applications:

WB: 1:1,000-1:3,000 (detect endogenous protein*)

*: The apparent protein size on WB may be different from the calculated M.W. due to modifications.

Product Data:

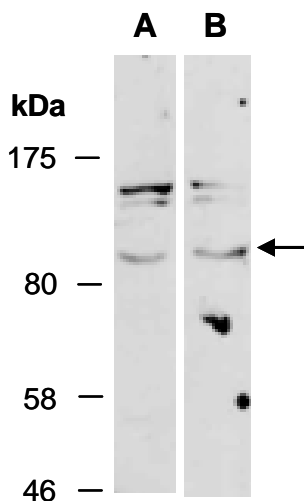


Fig 1. Western blot of total cell extracts from (A) human HeLa, (B) human T47D; using anti-FBW7 (N) (R0930-1) at RT for 2 h.