



Order: (888)-282-5810 (Phone)  
(818)-707-0392 (Fax)  
[order@abiocode.com](mailto:order@abiocode.com)  
Web: [www.Abiocode.com](http://www.Abiocode.com)

---

## **SELP (C1) Antibody, Rabbit Polyclonal**

**Cat#: R1097-1**

**Quantity: 100 ul**

**Predicted | Observed M.W.: 91 | 120-140 kDa**

**Lot#: Refer to vial**

**Application: WB**

**Uniprot ID: P16109**

### **Background:**

SELP is also known as P-selectin, which is a single-pass membrane protein belonging to the selectin/LECAM family. SELP is a  $\text{Ca}^{2+}$ -dependent receptor for myeloid cells that binds to carbohydrates on neutrophils and monocytes. SELP mediates the interaction of activated endothelial cells or platelets with leukocytes. The ligand recognized by SELP is sialyl-Lewis X. SELP mediates rapid rolling of leukocyte rolling over vascular surfaces during the initial steps in inflammation through interaction with PSGL1.

### **Other Names:**

P-selectin, CD62 antigen-like family member P, Granule membrane protein 140, GMP-140, Leukocyte-endothelial cell adhesion molecule 3, LECAM3, Platelet activation dependent granule-external membrane protein, PADGEM, CD62P, GRMP. GMRP

### **Source and Purity:**

Rabbit polyclonal antibodies were produced by immunizing animals with a GST-fusion protein containing the C-terminal region of human SELP. Antibodies were purified by affinity purification using immunogen.

### **Storage Buffer and Condition:**

Supplied in 1 x PBS (pH 7.4), 100 ug/ml BSA, 40% Glycerol, 0.01%  $\text{NaN}_3$ . Store at  $-20\text{ }^\circ\text{C}$ . Stable for 6 months from date of receipt.

### **Species Specificity:**

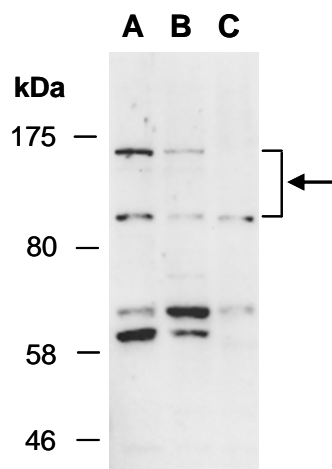
Human, Mouse

### **Tested Applications:**

WB: 1:1,000-1:3,000 (detect endogenous protein\*)

\*: The apparent protein size on WB may be different from the calculated M.W. due to modifications.

**Product Data:**



**Fig 1.** Western blot of total cell extracts from (A) human HeLa, (B) human Jurkat, (C) mouse thymus; using anti-SELP (C1) (R1097-1) at RT for 2 h.