



Order: (888)-282-5810 (Phone)
(818)-707-0392 (Fax)
order@abiocode.com
Web: www.Abiocode.com

CARD11 (C) Antibody, Rabbit Polyclonal

Cat#: R0903-2

Quantity: 100 ul

Predicted | Observed MW: 133 | 150 kDa

Lot#: Refer to vial

Application: WB

Uniprot ID: Q9BXL7

Background:

Caspase recruitment domain-containing protein 11 (CARD11) is involved in the costimulatory signal essential for T-cell receptor (TCR)-mediated T-cell activation. Its binding to DPP4 induces T-cell proliferation and NF-kappa-B activation in a T-cell receptor/CD3-dependent manner. CARD11 activates NF-kappa-B via BCL10 and IKK. It stimulates the phosphorylation of BCL10. CARD11 contains a caspase recruitment domain (CARD), a protein-binding module that mediates the assembly of CARD-containing proteins into apoptosis and NF-kappaB signaling complexes.

Other Names:

Caspase recruitment domain-containing protein 11, CARD-containing MAGUK protein 1, Carma 1, CARMA1

Source and Purity:

Rabbit polyclonal antibodies were produced by immunizing animals with a GST-fusion protein containing the C-terminal region of human CARD11. Antibodies were purified by affinity purification using immunogen.

Storage Buffer and Condition:

Supplied in 1 x PBS (pH 7.4), 100 ug/ml BSA, 40% Glycerol, 0.01% NaN₃. Store at -20 °C. Stable for 6 months from date of receipt.

Species Specificity:

Human

Tested Applications:

WB: 1:500-1:2,000 (detect endogenous protein*)

*: The apparent protein size on WB may be different from the calculated M.W. due to modifications.

Product Data:

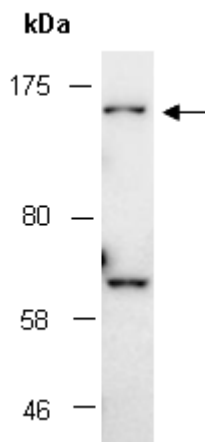


Fig 1. Western blot of total cell extracts from human K562, using Ab (R0903-2) at RT for 2 h.