



Order: (888)-282-5810 (Phone)  
(818)-707-0392 (Fax)  
[order@abiocode.com](mailto:order@abiocode.com)  
Web: [www.Abiocode.com](http://www.Abiocode.com)

---

## **HECTD1 (C) Antibody, Rabbit Polyclonal**

**Cat#: R0934-2**

**Quantity: 100 ul**

**Predicted M.W.: 289 kDa**

**Lot#: Refer to vial**

**Application: WB**

**Uniprot ID: Q9ULT8**

### **Background:**

HECT domain-containing protein 1 (HECTD1) is a probable E3 ubiquitin-protein ligase, which accepts ubiquitin from an E2 ubiquitin-conjugating enzyme in the form of a thioester and then directly transfers the ubiquitin to targeted substrates. HECTD1 may be required for development of the head mesenchyme and neural tube closure.

### **Other Names:**

E3 ubiquitin-protein ligase HECTD1, E3 ligase for inhibin receptor, EULIR, HECT domain-containing protein 1, KIAA1131

### **Source and Purity:**

Rabbit polyclonal antibodies were produced by immunizing animals with a GST-fusion protein containing the C-terminal region of human HECTD1. Antibodies were purified by affinity purification using immunogen.

### **Storage Buffer and Condition:**

Supplied in 1 x PBS (pH 7.4), 100 ug/ml BSA, 40% Glycerol, 0.01% NaN<sub>3</sub>. Store at -20 °C. Stable for 6 months from date of receipt.

### **Species Specificity:**

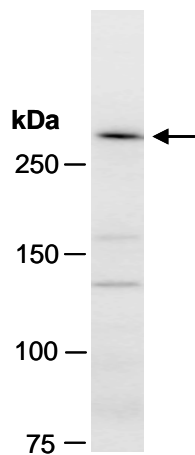
Human

### **Tested Applications:**

WB: 1:500-1:1,000 (detect endogenous protein\*)

\*: The apparent protein size on WB may be different from the calculated M.W. due to modifications.

**Product Data:**



**Fig 1.** Western blot of total cell extracts from human HeLa, using Ab (R0934-2) at RT for 2 h.