



Order: (888)-282-5810 (Phone)  
(818)-707-0392 (Fax)  
[order@abiocode.com](mailto:order@abiocode.com)  
Web: [www.Abiocode.com](http://www.Abiocode.com)

---

## **SEN5 (N) Antibody, Rabbit Polyclonal**

**Cat#:** R0725-1

**Quantity:** 100 ul

**Predicted M.W.:** 87 kDa

**Lot#:** Refer to vial

**Application:** WB

**Uniprot ID:** Q96HI0

### **Background:**

Sentrin-specific protease 5 (SEN5) is a protease that belongs to the peptidase C48 family. SEN5 catalyzes two essential functions in the SUMO pathway: processing full-length SUMO3 to its mature form and deconjugation of SUMO2 and SUMO3 from targeted proteins. It has weak proteolytic activity against full-length SUMO1 or SUMO1 conjugates. SEN5 is required for cell division.

### **Other Names:**

Sentrin-specific protease 5, Sentrin/SUMO-specific protease SEN5

### **Source and Purity:**

Rabbit polyclonal antibodies were produced by immunizing animals with a GST-fusion protein containing the N-terminal region of human SEN5. Antibodies were purified by affinity purification using immunogen.

### **Storage Buffer and Condition:**

Supplied in 1 x PBS (pH 7.4), 100 ug/ml BSA, 40% Glycerol, 0.01% NaN<sub>3</sub>. Store at -20 °C. Stable for 6 months from date of receipt.

### **Species Specificity:**

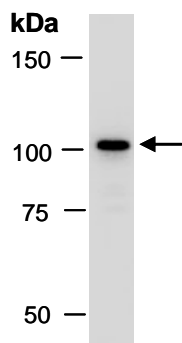
Human

### **Tested Applications:**

WB: 1:500-1:1,000 (detect endogenous protein\*)

\*: The apparent protein size on WB may be different from the calculated M.W. due to modifications.

**Product Data:**



**Fig 1.** Western blot of total cell extracts from human HeLa, using Ab (R0725-1) at RT for 2 h.