



Order: (888)-282-5810 (Phone)
(818)-707-0392 (Fax)
order@abiocode.com
Web: www.Abiocode.com

BCL6B (vPair™) Antibodies

Cat#: R0272-vp

Lot#: Refer to vial

Predicted M.W.: 51 kDa

Uniprot ID: O88282

Quantity: 50 ul BCL6B (N) (R0272-1) Rabbit Polyclonal Antibody &
50 ul BCL6B (C) (R0272-3) Rabbit Polyclonal Antibody

Product Introduction:

vPair™ antibodies represent a pair of fully characterized antibodies that recognize two different regions of a target protein. The product is developed by Abiocode to address whether the signal observed truly represents the protein of interest, an often encountered issue in antibody-based assays. The use of a pair of fully characterized vPair™ antibodies in the same assay can validate signal specificity since vPair™ antibodies recognize two independent epitopes of the same protein. Different sets of vPair™ antibodies are developed at Abiocode to work with specific applications, including antibody arrays, Western blot, IP-Western, ChIP, IHC, and FACS.

Background:

B-cell CLL/lymphoma 6 member B protein (BCL6B) is a nuclear protein induced in activated lymphocytes and acts as a sequence-specific transcriptional repressor in association with BCL6. BCL6B is necessary for activation of naive T-cells to antigenic stimulation. It may attenuate the regulatory effect of BCL6 on antigenic activation of naive CD4 T-cells by forming a heterodimer with BCL6.

Other Names:

B-cell CLL/lymphoma 6 member B protein, Bcl6-associated zinc finger protein, Bazf

Source and Purity:

Rabbit polyclonal antibodies were produced by immunizing animals with a GST-fusion protein containing either the N-terminal [BCL6B (N) (R0272-1)] or the C-terminal [BCL6B (C) (R0272-3)] region of mouse BCL6B. Antibodies were purified by affinity purification using immunogen.

Storage Buffer and Condition:

Supplied in 1 x PBS (pH 7.4), 100 ug/ml BSA, 40% Glycerol, 0.01% NaN₃. Store at -20 °C. Stable for 6 months from date of receipt.

For research use only. Not for therapeutic or diagnostic purposes.
Abiocode, Inc., 29397 Agoura Rd., Ste 106, Agoura Hills, CA 91301



Order: (888)-282-5810 (Phone)
(818)-707-0392 (Fax)
order@abiocode.com
Web: www.Abiocode.com

Species Specificity:

Mouse

Tested Applications:

WB: 1:1,000-1:5,000 (detect endogenous protein*)

*: The apparent protein size on WB may be different from the calculated M.W. due to modifications.

Product Data:

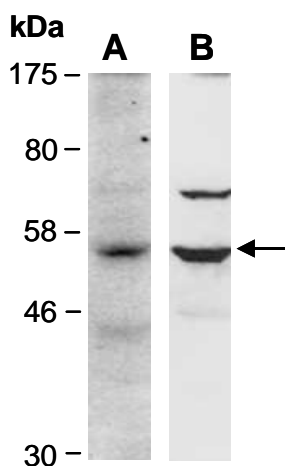


Fig 1. Western blot of total cell extracts from mouse liver, using 2 independent antibodies against 2 distinct regions of mouse BCL6B (A: R0272-1, N-terminal; B: R0272-3, C-terminal) at RT for 2 h.

Last Update: 08/2011

For research use only. Not for therapeutic or diagnostic purposes.
Abiocode, Inc., 29397 Agoura Rd., Ste 106, Agoura Hills, CA 91301