



Order: (888)-282-5810 (Phone)  
(818)-707-0392 (Fax)  
[order@abiocode.com](mailto:order@abiocode.com)  
Web: [www.Abiocode.com](http://www.Abiocode.com)

---

## RSF1 (C) Antibody, Rabbit Polyclonal

**Cat#:** R0271-1

**Quantity:** 100 ul

**Predicted M.W.:** 164 kDa

**Lot#:** Refer to vial

**Application:** WB

**Uniprot ID:** Q96T23

### **Background:**

Remodeling and spacing factor 1 (RSF1) is a nuclear protein required for assembly of regular nucleosome arrays by the RSF chromatin-remodeling complex. RSF1 facilitates transcription of hepatitis B virus (HBV) genes by the pX transcription activator. In case of infection by HBV, together with pX, it represses TNF-alpha induced NF-kappa-B transcription activation. RSF1 represses transcription when artificially recruited to chromatin by fusion to a heterogeneous DNA binding domain.

### **Other Names:**

Remodeling and spacing factor 1, Rsf-1, HBV pX-associated protein 8, Hepatitis B virus X-associated protein, p325 subunit of RSF chromatin-remodeling complex, HBXAP, XAP8

### **Source and Purity:**

Rabbit polyclonal antibodies were produced by immunizing animals with a GST-fusion protein containing the C-terminal region of human RSF1. Antibodies were purified by affinity purification using immunogen.

### **Storage Buffer and Condition:**

Supplied in 1 x PBS (pH 7.4), 100 ug/ml BSA, 40% Glycerol, 0.01% NaN<sub>3</sub>. Store at -20 °C. Stable for 6 months from date of receipt.

### **Species Specificity:**

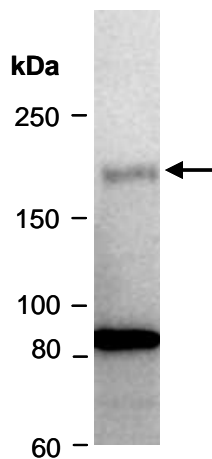
Human

### **Tested Applications:**

WB: 1:1,000-1:5,000 (detect endogenous protein\*)

\*: The apparent protein size on WB may be different from the calculated M.W. due to modifications.

**Product Data:**



**Fig 1.** Western blot of total cell extracts from human HeLa, using Ab (R0271-1) at RT for 2 h.