



Order: (888)-282-5810 (Phone)  
(818)-707-0392 (Fax)  
[order@abiocode.com](mailto:order@abiocode.com)  
Web: [www.Abiocode.com](http://www.Abiocode.com)

---

## KDM5C (vPair™) Antibodies

**Cat#:** R0231-vp

**Lot#:** Refer to vial

**Predicted M.W.:** 176 kDa

**Uniprot ID:** P41229

**Application:** WB

**Quantity:** 50 ul KDM5C (N) (R0231-1) Rabbit Polyclonal Antibody &  
50 ul KDM5C (C) (R0231-2) Rabbit Polyclonal Antibody

### **Product Introduction:**

vPair™ antibodies represent a pair of fully characterized antibodies that recognize two different regions of a target protein. The product is developed by Abiocode to address whether the signal observed truly represents the protein of interest, an often encountered issue in antibody-based assays. The use of a pair of fully characterized vPair™ antibodies in the same assay can validate signal specificity since vPair™ antibodies recognize two independent epitopes of the same protein. Different sets of vPair™ antibodies are developed at Abiocode to work with specific applications, including antibody arrays, Western blot, IP-Western, ChIP, IHC, and FACS.

### **Background:**

Lysine-specific demethylase 5C (KDM5C) is a histone demethylase that specifically demethylates 'Lys-4' of histone H3, thereby playing a central role in histone code. KDM5C does not demethylate histone H3 'Lys-9', H3 'Lys-27', H3 'Lys-36', H3 'Lys-79' or H4 'Lys-20'. KDM5C demethylates trimethylated and dimethylated but not monomethylated H3 'Lys-4'. KDM5C has been shown to participate in transcriptional repression of neuronal genes by recruiting histone deacetylases and REST at neuron-restrictive silencer elements.

### **Other Names:**

Lysine-specific demethylase 5C, Histone demethylase JARID1C, Jumonji/ARID domain-containing protein 1C, Protein SmcX, Protein Xe169, DXS1272E, JARID1C, SMCX, XE169

### **Source and Purity:**

Rabbit polyclonal antibodies were produced by immunizing animals with a GST-fusion protein containing either the N-terminal [KDM5C (N) (R0231-1)] or the C-terminal [KDM5C (C) (R0231-2)] regions of human KDM5C. Antibodies were purified by affinity purification using immunogen.



Order: (888)-282-5810 (Phone)  
(818)-707-0392 (Fax)  
[order@abiocode.com](mailto:order@abiocode.com)  
Web: [www.Abiocode.com](http://www.Abiocode.com)

**Storage Buffer and Condition:**

Supplied in 1 x PBS (pH 7.4), 100 ug/ml BSA, 40% Glycerol, 0.01% NaN<sub>3</sub>. Store at -20 °C. Stable for 6 months from date of receipt.

**Species Specificity:**

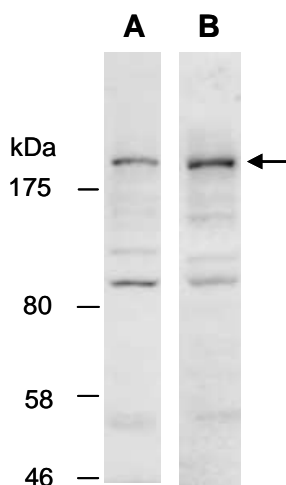
Human

**Tested Applications:**

WB: 1:1,000-1:5,000 (detect endogenous protein\*)

\*: The apparent protein size on WB may be different from the calculated M.W. due to modifications.

**Product Data:**



**Fig 1.** Western blot of total cell extracts from human HeLa, using 2 independent antibodies against 2 distinct regions of human KDM5C [A: R231-1 (N-terminal); B: R0231-2 (C-terminal)] at RT for 2 h.

Last Update: 08/2011

For research use only. Not for therapeutic or diagnostic purposes.  
Abiocode, Inc., 29397 Agoura Rd., Ste 106, Agoura Hills, CA 91301