



Order: (888)-282-5810 (Phone)  
(818)-707-0392 (Fax)  
[order@abiocode.com](mailto:order@abiocode.com)  
Web: [www.Abiocode.com](http://www.Abiocode.com)

---

## **CASP2 (C) Antibody, Rabbit Polyclonal**

**Cat#: R0216-2**

**Quantity: 100 ul**

**Predicted M.W.: 51 kDa**

**Lot#: Refer to vial**

**Application: WB**

**Uniprot ID: P42575**

### **Background:**

CASP2 is a member of the cysteine-aspartic acid protease (caspase) family, which mediates cellular apoptosis through the proteolytic cleavage of specific protein substrates. CASP2 may function in stress-induced cell death pathways, cell cycle maintenance, and the suppression of tumorigenesis. Increased expression of CASP2 may play a role in neurodegenerative disorders including Alzheimer's disease, Huntington's disease and temporal lobe epilepsy. Alternatively spliced transcript variants encoding multiple isoforms have been observed for CASP2 (provided by RefSeq).

### **Other Names:**

Caspase-2, CASP-2, Neural precursor cell expressed developmentally down-regulated protein 2, NEDD-2, ICH1, NEDD2

### **Source and Purity:**

Rabbit polyclonal antibodies were produced by immunizing animals with a GST-fusion protein containing the C-terminal region of human CASP2. Antibodies were purified by affinity purification using immunogen.

### **Storage Buffer and Condition:**

Supplied in 1 x PBS (pH 7.4), 100 ug/ml BSA, 40% Glycerol, 0.01% NaN<sub>3</sub>. Store at -20 °C. Stable for 6 months from date of receipt.

### **Species Specificity:**

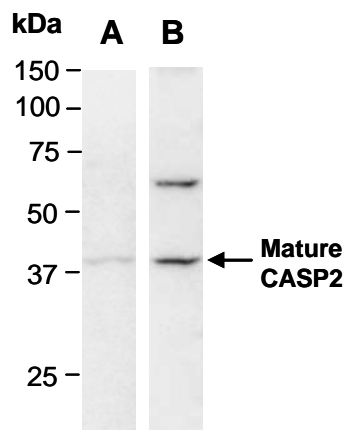
Human, Mouse

### **Tested Applications:**

WB: 1:1,000-1:5,000 (detect endogenous protein\*)

\*: The apparent protein size on WB may be different from the calculated M.W. due to modifications.

**Product Data:**



**Fig 1.** Western blot of total cell extracts from mouse kidney, using 2 independent antibodies against 2 distinct regions of human CASP2 [A: R0216-1 (N-terminal); B: R0216-2 (C-terminal)] at RT for 2 h.