



Order: (888)-282-5810 (Phone)
(818)-707-0392 (Fax)
order@abiocode.com
Web: www.Abiocode.com

SUMO2 Antibody, Rabbit Polyclonal

Cat#: R0126-1

Quantity: 100 ul

Predicted M.W.: 11 kDa

Lot#: Refer to vial

Application: WB

Uniprot ID: P61956

Background:

SMT3 suppressor of mif two 3 homolog 2 (SUMO2) is a member of the small ubiquitin-like modifier protein family. It is a ubiquitin-like protein that can bind to a target protein as part of a post-translational modification. However, instead of targeting proteins for degradation, it is involved in a number of cellular processes, such as nuclear transport, DNA replication and repair, transcriptional regulation, mitosis, apoptosis, and protein stability. In order for SUMO2 to be active, the last two amino acids on the carboxy-terminus must be cleaved.

Other Names:

Small ubiquitin-related modifier 2, SUMO-2, HSMT3, SMT3 homolog 2, SUMO-3, Sentrin-2, Ubiquitin-like protein SMT3A, Smt3A, MGC117191, SMT3B, SMT3H2

Source and Purity:

Rabbit polyclonal antibodies were produced by immunizing animals with a GST-fusion protein containing the full-length human SUMO2. Antibodies were purified by affinity purification using immunogen.

Storage Buffer and Condition:

Supplied in 1 x PBS (pH 7.4), 100 ug/ml BSA, 40% Glycerol, 0.01% NaN₃. Store at -20 °C. Stable for 6 months from date of receipt.

Species Specificity:

Human

Tested Applications:

WB: 1:1,000-1:5,000 (detect endogenous protein*)

*: The apparent protein size on WB may be different from the calculated M.W. due to modifications.

Product Data:

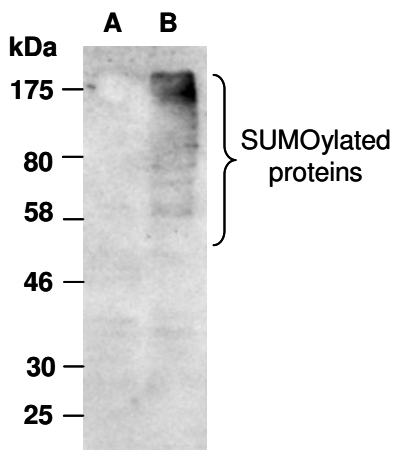


Fig 1. Western blot of total cell extracts from human 293T cells, either untreated (A) or treated with 0.3% H₂O₂ for 20 min (B), using Ab (R0126-1) at RT for 2 h.