



Order: (888)-282-5810 (Phone)
(818)-707-0392 (Fax)
order@abiocode.com
Web: www.Abiocode.com

RPS6KA3 (N) Antibody, Rabbit Polyclonal

Cat#: R0113-1

Quantity: 100 ul

Predicted M.W.: 84 kDa

Lot#: Refer to vial

Application: WB

Uniprot ID: P51812

Background:

Ribosomal protein S6 kinase, 90kDa, polypeptide 3 (RPS6KA3) is a member of the ribosomal S6 kinase family of serine/threonine kinases. It phosphorylates various substrates including members of the MAP kinase signaling pathway and activators of the transcription factor CREB. RPS6KA3 is involved in controlling cell growth and differentiation. Aberrant activity may be implicated in breast and prostate cancers and mutations in this gene have been linked with Coffin-Lowry syndrome.

Other Names:

Ribosomal protein S6 kinase alpha-3, S6K-alpha-3, 90 kDa ribosomal protein S6 kinase 3, p90RSK3, Insulin-stimulated protein kinase 1, ISPK-1, MAP kinase-activated protein kinase 1b, MAPKAP kinase 1b, MAPKAPK1b, Ribosomal S6 kinase 2, RSK-2, pp90RSK2, MRX19, CLS, RP11-39H10.3, HU-3

Source and Purity:

Rabbit polyclonal antibodies were produced by immunizing animals with a GST-fusion protein containing the N-terminal region of human RPS6KA3. Antibodies were purified by affinity purification using immunogen.

Storage Buffer and Condition:

Supplied in 1 x PBS (pH 7.4), 100 ug/ml BSA, 40% Glycerol, 0.01% NaN₃. Store at -20 °C. Stable for 6 months from date of receipt.

Species Specificity:

Human

Tested Applications:

WB: 1:1,000-1:5,000 (detect endogenous protein*)

*: The apparent protein size on WB may be different from the calculated M.W. due to modifications.

Product Data:

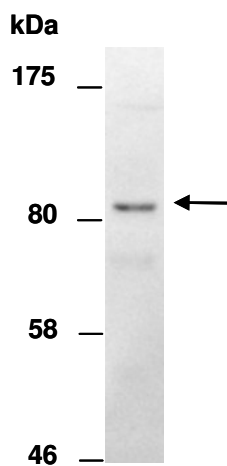


Fig 1. Western blot of whole cell extract from human MCF7, using Ab (R0113-1) at RT for 2 h.