



Order: (888)- 282-5810 (Phone)  
(818)-707-0392 (Fax)  
[order@abiocode.com](mailto:order@abiocode.com)  
Web: [www.Abiocode.com](http://www.Abiocode.com)

---

## **SENP2 (M) Antibody, Rabbit Polyclonal**

**Cat#:** R0030-1

**Lot#:** Refer to vial

**Quantity:** 100 ul

**Application:** WB

**Predicted M.W.:** 68 kDa

**Uniprot ID:** Q9HC62

### **Background:**

SENP2 is a protease that catalyzes two essential functions in the SUMO pathway. It processes full length SUMO1, SUMO2 and SUMO3 to their mature forms and deconjugates these same SUMO molecules from targeted proteins.

### **Other Names:**

AXAM2, DKFZp762A2316, KIAA1331, SMT3IP2

### **Source and Purity:**

Rabbit polyclonal antibodies were produced by immunizing animals with a GST-fusion protein containing the middle region of human SENP2. Antibodies were purified by affinity purification using immunogen.

### **Storage Buffer and Condition:**

Supplied in 1x PBS (pH 7.4), 100 µg/ml BSA, 40% Glycerol, 0.01% NaN<sub>3</sub>. Store at -20 °C. Stable for 6 months from date of receipt.

### **Species Specificity:**

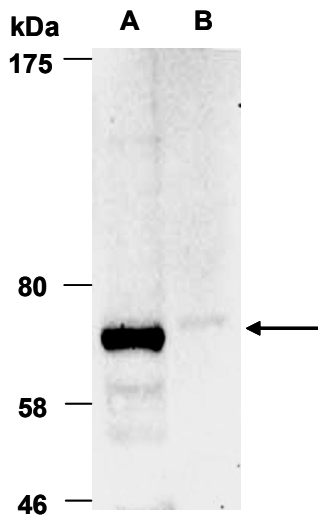
Human, Mouse

### **Tested Applications:**

WB: 1:1,000-1:5,000 (detect endogenous protein\*)

\*: The apparent protein size on WB may be different from the calculated M.W. due to modifications.

**Product Data:**



**Fig.1** Western blot of total cell extract from (A) human MDA-MB231, (B) mouse kidney, using Ab (R0030-1) at RT for 2 h.