



Order: (888)-282-5810 (Phone)
(818)-707-0392 (Fax)
order@abiocode.com
Web: www.Abiocode.com

CBX6 (C) Antibody, Rabbit Polyclonal

Cat#: R0043-1

Quantity: 100 ul

Predicted M.W.: 44 kDa

Lot#: Refer to vial

Application: WB

Uniprot ID: O95503

Background:

Chromobox protein homolog 6 (CBX6) is a nuclear protein that contains a chromo domain. CBX6 is a component of the chromatin-associated polycomb complex (PcG). CBX6 is involved in maintaining the transcriptionally repressive state of genes. It may modify chromatin, rendering it heritably changed in its expressibility.

Other Names:

Chromobox protein homolog 6

Source and Purity:

Rabbit polyclonal antibodies were produced by immunizing animals with a GST-fusion protein containing the C-terminal region of human CBX6. Antibodies were purified by affinity purification using immunogen.

Storage Buffer and Condition:

Supplied in 1 x PBS (pH 7.4), 100 µg/ml BSA, 40% Glycerol, 0.01% NaN₃. Store at -20 °C. Stable for 6 months from date of receipt.

Species Specificity:

Human, Mouse

Tested Applications:

WB: 1:1,000-1:5,000 (detect endogenous protein*)

*: The apparent protein size on WB may be different from the calculated M.W. due to modifications.

Product Data:

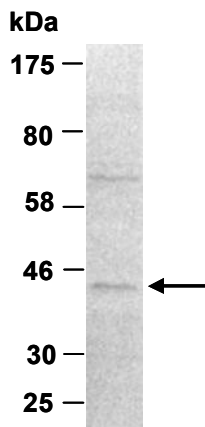


Fig 1. Western blot of total cell extracts from human HepG2, using Ab (R0043-1) at RT for 2 h.