



Order: (888)-282-5810 (Phone)
(818)-707-0392 (Fax)
order@abiocode.com
Web: www.Abiocode.com

SAE1 Antibody, Rabbit Polyclonal

Cat#: R0052-1

Quantity: 100 ul

Predicted M.W.: 38 kDa

Lot#: Refer to vial

Application: WB

Uniprot ID: Q9UBE0

Background:

SUMO1 activating enzyme subunit 1 (SAE1) is involved in posttranslational modification of proteins by SUMOylation, which is the covalent conjugation of proteins with the small protein SUMO1. SAE1 and UBA2 form a heterodimer that functions as a SUMO-activating enzyme for the SUMOylation of protein substrates. Protein SUMOylation has been implicated in the regulation of various processes, including transcriptional regulation, protein structure and intracellular localization.

Other Names:

SUMO-activating enzyme subunit 1, AOS1, SUA1, UBLE1A

Source and Purity:

Rabbit polyclonal antibodies were produced by immunizing animals with a GST-fusion protein containing the full length human SAE1. Antibodies were purified by affinity purification using immunogen.

Storage Buffer and Condition:

Supplied in 1 x PBS (pH 7.4), 100 ug/ml BSA, 40% Glycerol, 0.01% NaN₃. Store at -20 °C. Stable for 6 months from date of receipt.

Species Specificity:

Human

Tested Applications:

WB: 1:1,000-1:5,000 (detect endogenous protein*)

*: The apparent protein size on WB may be different from the calculated M.W. due to modifications.

Product Data:

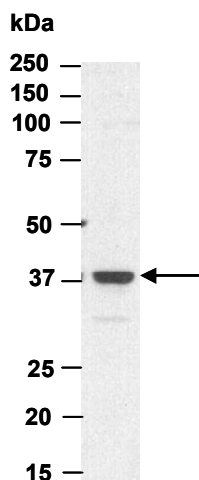


Fig 1. Western blot of total cell extracts from human 293T, using Ab (R0052-1) at RT for 2 h.